

Made for  
people.  
*At work.*



# Made for people. *At work.*

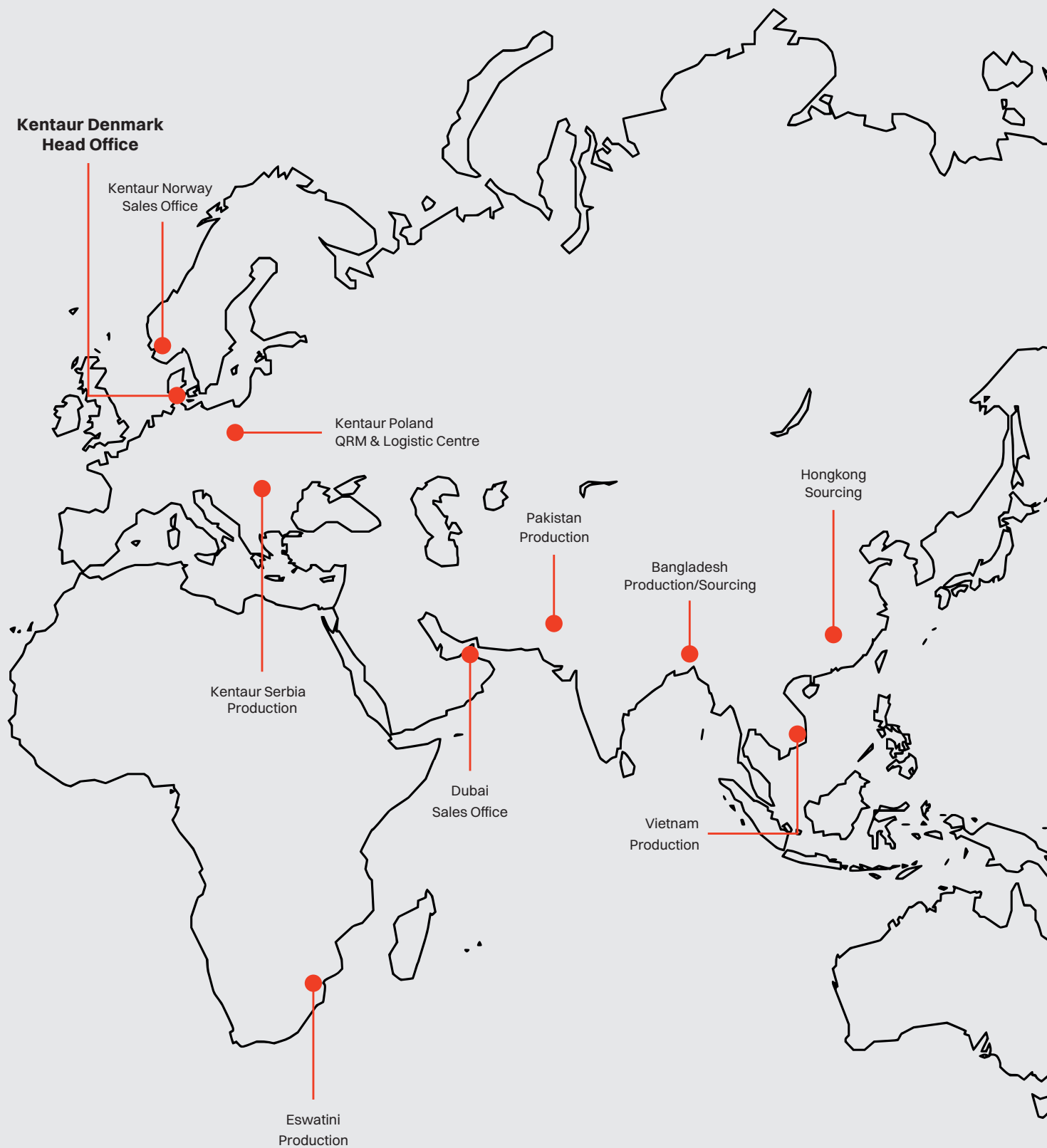
Workwear matters. To the celebrated Chef de Cuisine and the busy waiter. To the dedicated clinic employee and the compassionate healthcare assistant. And to most other people at work.

Therefore, since 1990, Kentaur has focused on creating workwear that, in addition to looking good, is also comfortable and functional, down to the smallest detail – giving you workwear you actually enjoy wearing.

At the same time, it is our ambition that each and every piece of clothing is created to add value for professional laundries within the textile service sector. Specifically adapted to their business models and requirements. We strive always to maintain a responsible supply chain and act proper in everything we do.

We are Danish – in our essence, our business ethics, our organizational culture, and in our relaxed and straightforward dealings. With each other. And with our customers and partners.

Bottom line, what we do, we do for people. *At work.*



# Thinking about responsibility. *At work.*

For us, responsibility is more than just a word or a concept. It is our unwavering commitment. You should, therefore, see our Work.Wear&Care strategy as a testament to our dedication to crafting workwear that goes beyond mere functionality - it is about responsibility, accessibility, and making a positive impact on our world. When you choose Kentaur workwear, you choose more than just a garment; you choose:

- High Durability & Long Lifetime: We create products that stand the test of time, wash after wash.
- Timeless Styles with a Long Product Life Cycle: Our designs are not just for today; they are for the future, ensuring your workwear remains relevant and enduring.
- Social and Environmentally Responsible Production: We are on a continuous journey to reduce our social and environmental footprints, making every step count towards a better world.
- Circular Take-Back Solutions: We believe in second chances. Therefore, we are working on finding solutions to give old garments a new life, reducing the impact on landfills.

Our Work.Wear&Care strategy is not just about us. It is about contributing to The 17 Global Goals for Sustainable Development. Focused on goals 8 (Decent Work and Economic Growth), 12 (Responsible Consumption and Production), and 13 (Climate Action), we are making strides toward a better future. Join us in making every workday not just about what you wear – but about the positive impact you create.

To put it simply, we continuously think about our responsibilities. At work.

# Responsible Choice

As part of our Work.Wear&Care strategy, we are consistently striving for more responsible solutions when developing and selecting our materials.

Items with responsible materials are marked with "Responsible Choice." All items with this label contain materials that are a better alternative to conventional ones. In our Responsible Choice category, you will find items containing materials such as TENCEL™ Lyocell, TENCEL™ Lyocell x REFIBRA™ Technology, REPREEVE® recycled polyester, cotton sourced as Better Cotton, or fabrics with recycled cotton and/or polyester.

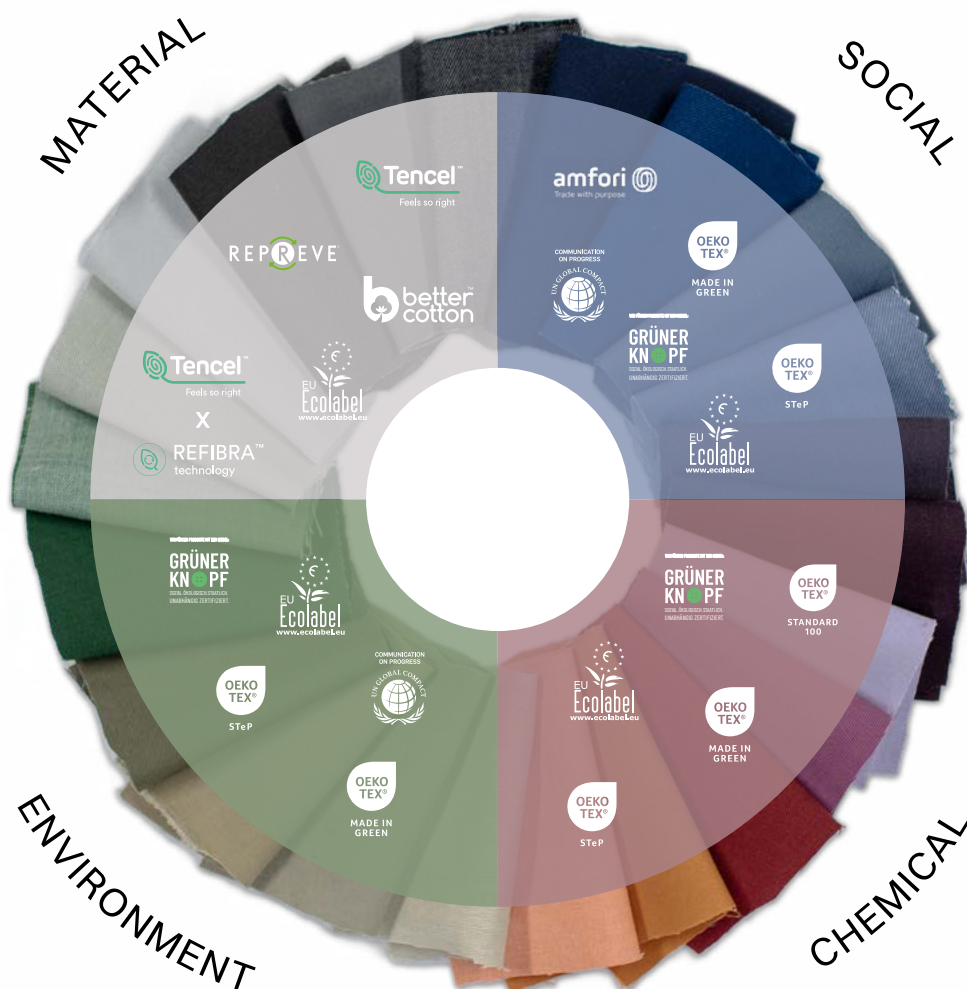
It has always been crucial for us to create workwear with a long lifespan. Therefore, the fabrics we use in our production must meet high standards. We ensure this by conducting various wash and wear tests, guaranteeing that our items are laundry-proof. Moreover, the high quality of our articles contributes to limiting resource waste. Whether our items are labeled Responsible Choice or not, you can always expect garments with high durability and longevity. Our passion for progress means that we continuously explore the

market for more responsibly sourced materials for production. You will, therefore, discover more alternatives to conventionally produced fabrics in the future.

## BETTER COTTON

Kentaur is a proud member of the Better Cotton Initiative. With our membership, we have committed ourselves to improving global cotton cultivation. Better Cotton operates as a mass-balance system. Hence, purchasing a product with the Better Cotton logo is not a guarantee that the product itself contains cotton from Better Cotton-certified farming. However, by buying a product with sourced Better Cotton, you contribute to our investment in Better Cottons mission.

All the cotton used in our products labeled "Responsible Choice" comes from Better Cotton. However, we only mark products with the Better Cotton logo when cotton is the dominant material in the product. If you want to learn more about Better Cotton, visit [bettercotton.org/massbalance](https://bettercotton.org/massbalance). We are committed to sourcing 50% of our cotton as Better Cotton by 2025.



#### MATERIAL WITH RECYCLED TEXTILES

Our materials with recycled textiles contain recycled textile fibers from pre- and/or post-consumer textiles. Pre-consumer textiles are textile waste from production, while post-consumer textiles are textiles that have been worn out in their current form.

The material quality is developed for industrial laundries, ensuring good durability and colorfastness. The percentage of recycled material in the fabrics can vary from style to style. If you want to know the precise percentage of recycled material, you can always find this information on the individual product.

#### REPVE® RECYCLED POLYESTER (rPES)

REPVE® is polyester made from used plastic bottles. REPVE® works to create a cycle where waste is recycled.

#### TENCEL™ LYOCCELL

TENCEL™ LYOCCELL fibers are derived from controlled or certified wood sources and produced in a closed loop process, which recovers 99,8% of the solvent –

resulting in a close-to-zero wastage. The fibers support a natural dry feeling through moisture control and are naturally soft and smooth to the touch. TENCEL™ is a trademark of Lenzing AG.

#### TENCEL™ LYOCCELL x REFIBRA™ TECHNOLOGY

To produce TENCEL™ Lyocell with REFIBRA™ Technology, wood and cotton textile waste are used as raw materials. The fibers contain a minimum of 30% recycled materials. TENCEL™ Lyocell fibers with REFIBRA™ Technology offer the same benefits as standard TENCEL™ Lyocell fibers. Like TENCEL™, REFIBRA™ is also a trademark of Lenzing AG.

#### EU ECOLABEL

EU Ecolabel is the official eco-label of the European Union. This recognized eco-label is known for its stringent environmental requirements, ensuring that certified products are more sustainable. By including the entire product life cycle in the assessment, it ensures that only products meeting these criteria receive certification.

## MEMBERSHIPS & CERTIFICATIONS

**THE UN GLOBAL COMPACT** is the world's largest sustainability initiative for businesses, focusing on 10 principles distributed across four main areas: human rights, labor, environment, and anti-corruption.

Each core area is embedded in our strategy, where we have defined corresponding activities that are implemented daily to ensure development and improvement.

**AMFORI BSCI** works to enhance social conditions in global supply chains. Amfori BSCI is one of the initiatives ensuring continuous improvement in our efforts related to human rights, labor rights, and anti-corruption.

As a member, we commit to performing in the 13 performance areas that constitute the foundation of Amfori BSCI's Code of Conduct. Likewise, our suppliers also commit to adhering to Amfori BSCI's Code of Conduct and undergo regular third-party audits.

The social performance areas include aspects such as occupational health and safety, fair compensation and working hours, employee involvement, and the prevention of discrimination, child labor, or forced labor.

### **WE ARE PIONEER PARTNER OF TEXTILE REVOLUTION**

Textile Revolution is an independent think tank dedicated to making the textile industry more sustainable. They achieve this by providing advice and sharing knowledge with their members, enabling them to optimize their business processes.

**OEKO-TEX® STANDARD 100** is a certification for products that assures the consumer that no components of a Kentaur product contain substances that are harmful to health or the environment in larger quantities than permitted in product class II (products in contact with the skin).

**OEKO-TEX® STeP** is a certification for production companies that encompasses a comprehensive assessment of chemical management, environmental impact, environmental management, occupational health and safety, social responsibility (CSR), and quality management.

**OEKO-TEX® MADE IN GREEN** is a labeling for OEKO-TEX® STANDARD 100 certified products from an OEKO-TEX® STeP-certified production.

**GRÜNER KNOPF** is a certification for responsible textiles. The certification imposes binding requirements for the protection of people and the environment in the textile supply chain.

Both companies and products are subject to specific criteria. Grüner Knopf focuses on five main topics that companies must adhere to: adaptation of company policies, risk identification, implementation of preventive measures, transparent external communication, and establishment of a complaint management system.



# Providing Value Added Service. *At work.*



## PERSONAL CONTACT

At Kentaur, we are convinced that unparalleled solutions are born from collaborative efforts. You will, therefore, get a dedicated contact to guide you in crafting bespoke solutions that are the perfect fit for your unique requirements.



## MIX&MATCH CONFIGURATOR

Looking for guidance on coordinating workwear for a new team? We have made it easier to mix and match, offering a clear view of how our varied items work together. Download your combinations and consult with customers, colleagues, and others.



## EMBROIDERY, TRANSFER, AND CUSTOMIZATION

Our team is committed to providing workwear that perfectly matches your individual preferences. At our production facility in Poland, we offer a comprehensive range of personalization services, including embroidery, transfers, and tailoring for pants, sleeves, and beyond.



## MARKETING AND GRAPHIC SUPPORT

Should you need any imagery, graphics, or copy you have observed from our side, do not hesitate to contact our marketing team. A collection of visuals is at your disposal for product promotion. Furthermore, feel free to amplify our social media content or request assistance for your own content related to Kentaur.



## CHIP AND OVERVIEW

Want the ability to track your garments and create a list for easy identification? Our innovative solution integrates tracking chips within our full product range, enabling the effortless pairing of items with their corresponding chips for seamless organization.



## OTHER SERVICES

Our commitment is to deliver exceptional service to every customer. We are at your service for:

- Applying badges.
- Bagging items.
- Stamping – up to 12 characters.



## MY KENTAUR

We strive to streamline the ordering process and provide you with an easy overview of articles in stock. Therefore, we've introduced the 'My Kentaur' universe – your go-to resource for tracking your orders, checking stock levels of specific items, confirming size availability, and more.

Should you require further assistance beyond what is provided here, please reach out to your contact at Kentaur. It is our outmost priority to ensure you consistently experience top-quality service. *At work.*

# Thinking about the little details. *At work.*

With our KENFLEX service, we offer the opportunity to incorporate a personal touch into a range of standard items from Kentaur. Our goal is to simplify the process of finding workwear that aligns perfectly with your customers' needs. KENFLEX enables you to customize key design elements, crafting a tailored and standout workwear solution.

Leave an enduring impression that mirrors your customers' visual brand identity, merged with our functional, Scandinavian-inspired attire. KENFLEX empowers you to realize your vision, ensuring that your customers' teams are distinguished with elegance and style.

Explore the example provided to learn which design elements you can alter to fashion the ideal workwear for your clients.

With KENFLEX, every detail is at your fingertips, redefining professionalism. *At work.*



# Key to symbols



**ISO 15797**  
The product meets the requirements of Textile Service and can, therefore, be handled according to the ISO 15797 standard.



**HACCP**  
The Kentaur HACCP collection is DIN 10524 certified in all three hygiene risk classes, complying with the legal requirements for food safety.



**INCHES - OPTIMAL FIT**  
The product is supplied in inch sizes, which provides a widened range of sizes.



**VAT DYED**  
Used to dye cellulose fibers like cotton and lyocell, these materials get the best attainable color fastness. Vat dyes withstand bleaches better than other dye types.



**R&D DYED**  
Products are colored with reactive and dispersed dyes. Clear shades can be obtained with R&D. They do not tolerate bleaching.



**BREATHE & STRETCH**  
The product contains materials that allow greater breathability, and mobility.



**COMFORT STRETCH**  
The back of the product is cut on the bias, and the diagonal direction allows better elasticity and freedom of movement for the wearer.



**STRETCH**  
Our high-quality stretch fabrics can withstand washing and drying at high temperatures without affecting the elasticity and fit.



**MOBILITY SLEEVES**  
Products with mobility sleeves have a sleeve fit that ensures that the jacket does not slide up during movement.



**PULL UP CUFF**  
Our Pull-Up cuffs have an elastic band and button on the cuff, making it easy to pull up the sleeve in a second.



**PULL UP**  
Pull-Up elastic in the sleeves, which makes it easy to pull them up. Patented.



**ADJUSTABLE WAIST**  
The product is adjustable at the waist for better fit and comfort using an elastic and button or snap fastener.



**INTERLINING**  
The product has stiffening interlinings from Freudenberg, which meet the requirements of Textile Service (ISO 15797).



**MOISTURE MANAGEMENT**  
The product contains fabric with moisture-absorbent benefits that keeps the wearer dry throughout the day.



**ERGONOMIC NECKLINE**  
The neck design ensures an even distribution of the weight of the article and gives ergonomic advantages. Registered design DM221854.



**THE REGULAR SILHOUETTE**  
The Regular Silhouette is fitting to the body without clinging. Regular is neither too tight nor too loose.



**THE RELAXED SILHOUETTE**  
The Relaxed Silhouette has a loose fit and is looser from hip to bottom.



**THE SHAPED SILHOUETTE**  
The Shaped Silhouette is slim at the knee and bottom, creating a slim look.



**THE SLIM SILHOUETTE**  
The Slim Silhouette fits closely to the body, from the hips down to the feet, creating a clean appearance.



**SNAP-ON APRON**  
The product is equipped with press buttons that allow the attachment of an apron to a chef's jacket.





# Food Industry / HACCP

14	HACCP Info
15	Upper Parts
21	Pants
23	Headwear
24	PRO WEAR/ID

# Hygiene Risk

The Kentaur HACCP collection is DIN 10524  
certified in all three hygiene risk classes

## **RISK CLASS ONE**

### **LOW HYGIENE RISK**

If the hygiene risk is low, when handling non-perishable foods or ingredients, work wear has a relatively low protective function against contact with foods, provided that the foods are sufficiently protected by packaging. This risk class includes handling for example coffee or potato crisps.

## **RISK CLASS TWO**

### **HIGH HYGIENE RISK**

If the hygiene risk is high, e.g. when handling foods or ingredients that are perishable and not packaged, work wear has a greater function as protection against contact with foods. Especially if the foods are not to be processed further, and if there is a risk that microorganisms in or on the foods can multiply (e.g. when supplying unpackaged meat). This group also includes activities that involve processing foods, either manually or technologically, which can influence bacterial reproduction, e.g. drying, salting, heat processes etc.

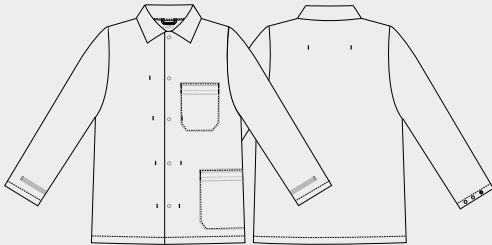
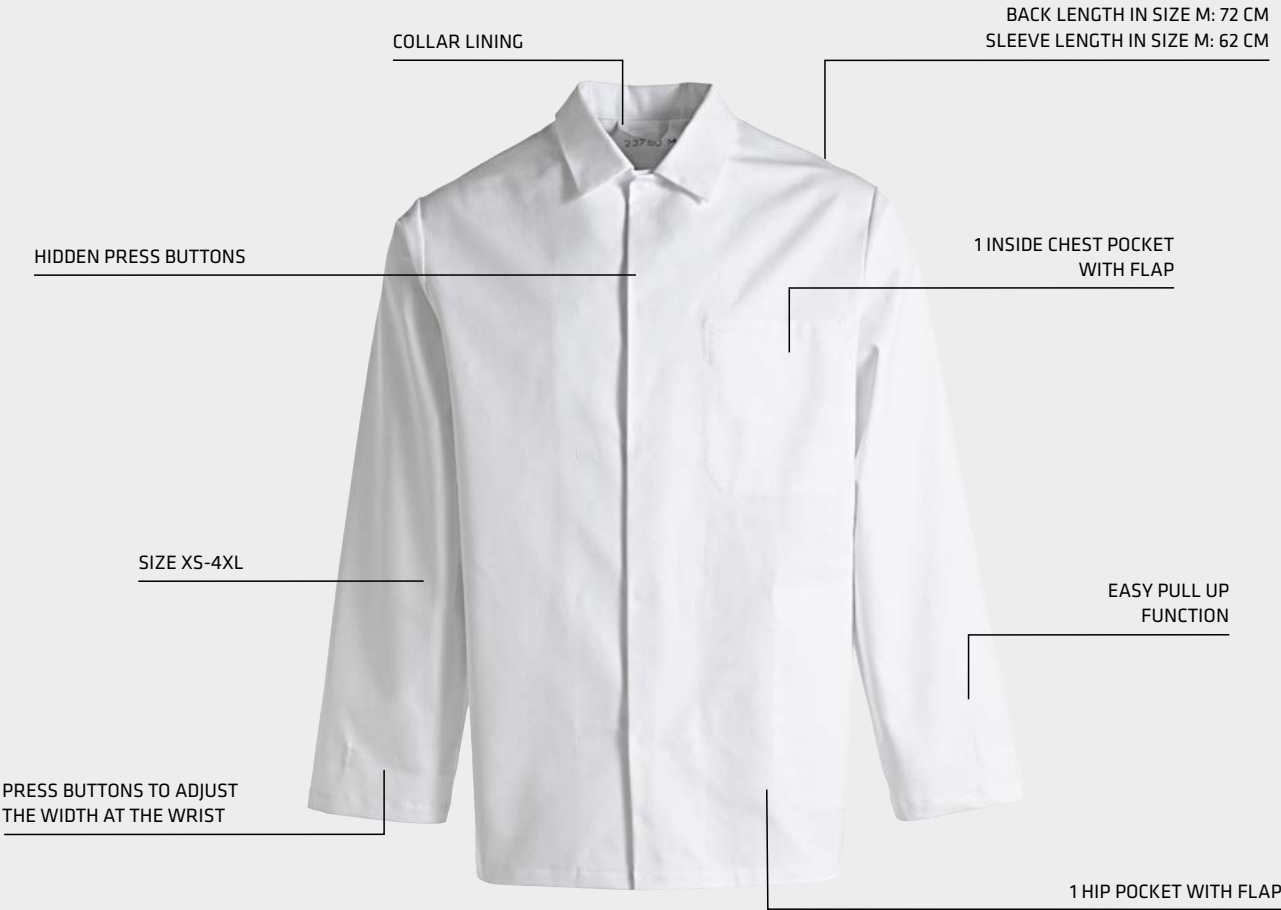
## **RISK CLASS THREE**

### **HIGHEST HYGIENE RISK**

If the hygiene risk is at the highest level, e.g. when handling unpackaged, ready-to-eat or extremely perishable foods, a very high degree of protection must be guaranteed, since the foods are not technologically stabilised, and microorganisms can reproduce. This risk class includes handling for example fresh salads and meat spreads for bread.



# 23760 UNISEX JACKET



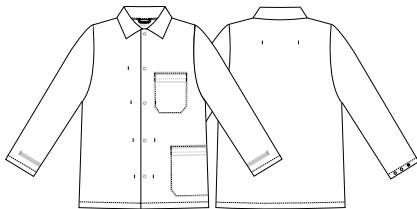
**QUALITY**  
101 65/35% PES/CO, 245g/m<sup>2</sup>





## 23769 UNISEX JACKET EXTRA LONG

- Press buttons to adjust the width at the wrist
- Collar lining
- 1 inside chest pocket with flap
- 1 hip pocket
- Hip pocket has been moved to the side for better ergonomic comfort
- Hidden press buttons
- Easy pull up function
- Back length in all sizes: 82 cm
- Sleeve length in size M: 62 cm
- Size S-4XL



23769-  
101-101  
white

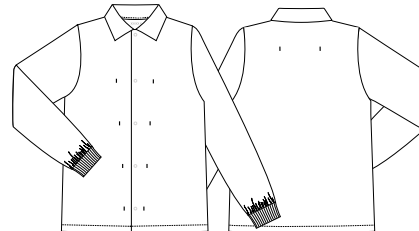
### QUALITY

101 65/35% PES/CO, 245g/m<sup>2</sup>



## 23770 UNISEX JACKET

- Collar strap
- Collar lining
- Hidden press buttons
- Ribbing at sleeves
- Back length in size M: 72 cm
- Sleeve length in size M: 65 cm
- Size XS-4XL



23770-  
102-101  
white

### QUALITY

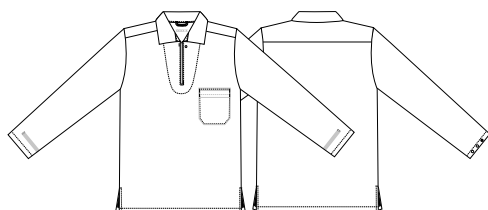
102 65/35% PES/CO, 210g/m<sup>2</sup>





## 2485 UNISEX SMOCK

- Collar lining
- 1 inside chest pocket with flap
- Easy pull up function
- Press buttons to adjust the width at the wrist
- Back length in size M: 72 cm
- Size XS-4XL



2485-  
101-101  
white

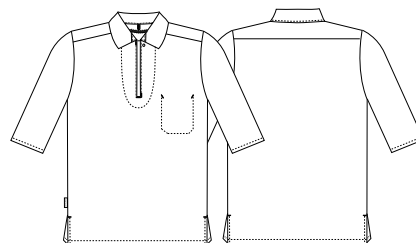
### QUALITY

101 65/35% PES/CO, 245g/m<sup>2</sup>



## 2517 UNISEX SMOCK S/S

- Neck opening with press button
- Inside chest pocket
- 1/2 sleeves
- Side slits
- Back length in size M: 75 cm
- Size XS-3XL



2517-  
102-101  
white

### QUALITY

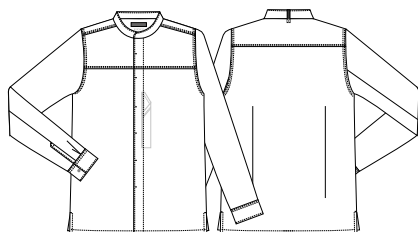
102 65/35% PES/CO, 210g/m<sup>2</sup>





## 25240 CHEF/SERVICE SHIRT L/S

- Responsible Choice in quality 3086
- Recycled polyester from PET bottles in quality 3086
- Modern and optimal fit
- Inside hidden pen pocket in front panel
- Side slits
- GRÜNER KNOPF and OEKO-TEX® MADE IN GREEN in quality 3086
- When using for risk classes RK2 and RK3, it must be ensured that contaminations must be easily visible
- Size XS-4XL



25240-  
2086-703  
chambray grey

25240-  
3086-639  
dark ocean

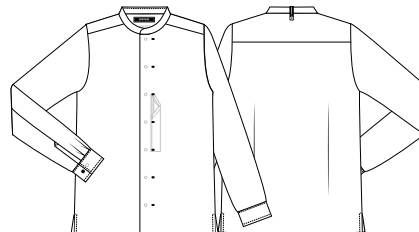
## QUALITY

2086 65/35% PES/CO, 150g/m<sup>2</sup>  
3086 65/35% rPES/CO, 150g/m<sup>2</sup>



## 25241 CHEF SHIRT WITH TENCEL™ LYOCCELL

- Responsible Choice
- TENCEL™ Lyocell
- Recycled polyester from PET bottles in quality 924
- Modern and optimal fit
- Inside hidden pen pocket in front panel
- Collar strap for bib apron
- Side slits
- Size XS-4XL



25241-  
934-101  
white

25241-  
924-603  
sailor blue

## QUALITY

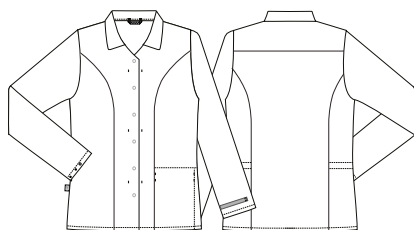
934 50/50% CLY/PES, 215g/m<sup>2</sup>  
924 50/50% CLY/rPES, 195g/m<sup>2</sup>





## 15019 LADIES FUNCTIONAL SHIRT

- Easy pull up function
- Inside adjustable waist
- Adjustable width at the wrist
- 2 hip pockets
- Back length in size M: 71,5 cm
- Size XS-4XL



15019-  
102-101  
white

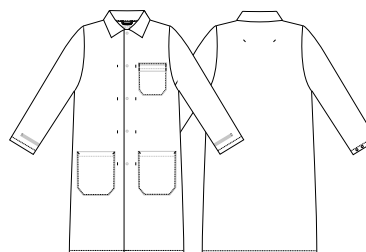
### QUALITY

102 65/35% PES/CO, 210g/m<sup>2</sup>



## 2027 UNISEX COAT

- Press buttons to adjust the width at the wrist
- Collar lining
- 3 inside pockets
- Chest pocket with flap
- Hidden press buttons
- Easy pull up function
- Back length in size M: 101 cm
- Sleeve length in size M: 62 cm
- Size XS-4XL



2027-  
101-101  
white



2027-  
101-701  
light grey



2027-  
101-602  
royal blue

### QUALITY

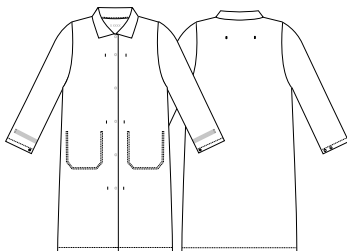
101 65/35% PES/CO, 245g/m<sup>2</sup>





♀  
10301 LADIES COAT

- Collar lining
- Hidden press buttons
- Inside hip pockets
- Press buttons to adjust the width at the wrist
- Easy pull up function
- Size XS-4XL



10301-  
102-101  
white

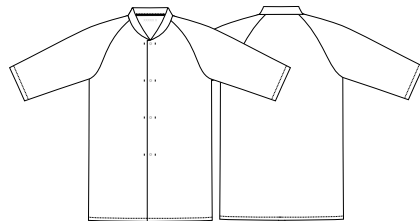
**QUALITY**

102 65/35% PES/CO, 210g/m<sup>2</sup>



♀  
20200 VISITORS COAT

- Hidden press buttons
- Without pockets
- Suitable for visitors
- Oversize design - to wear other clothes underneath
- Back length in size M: 101 cm
- Size S-XL



20200-  
102-500  
light blue

**QUALITY**

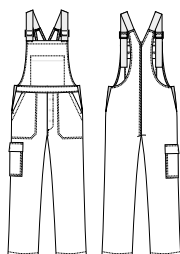
102 65/35% PES/CO, 210g/m<sup>2</sup>





## 1658 UNISEX BIB PANTS

- Adjustable braces
- 1 inside chest pocket with flap
- Thigh pocket with a flap
- Hidden press buttons
- 2 hip pockets with hidden press buttons
- Hidden press buttons in fly
- Straps for hanging up in a steamer
- Inside length 80 cm
- 16589 - Inside length 92 cm unhemmed
- Size S-4XL



1658-  
101-101  
white

### QUALITY

101 65/35% PES/CO, 245g/m<sup>2</sup>



## 16506 UNISEX JOGGING PANTS

- Elastic and tie string in waist
- Without pockets
- Press buttons by the ankle
- Straps for hanging up in a steamer
- Stamp label
- Inside length 80 cm
- Size XS-4XL



16506-  
101-101  
white

### QUALITY

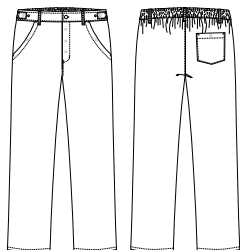
101 65/35% PES/CO, 245g/m<sup>2</sup>





## 18115 UNISEX PANTS

- Adjustable waist
- Elastic in the back
- Hidden press buttons in fly
- 2 side pockets with hidden pressbuttons
- 2 side pockets
- 1 back pocket with hidden press buttons
- Straps for hanging up in a steamer
- Inside length 80 cm
- 18118 - inside length 90 cm, white
- Size XS-4XL



18115-101-101 white

## QUALITY

101 65/35% PES/CO, 245g/m<sup>2</sup>

## 18116 UNISEX PANTS WITH POCKET

- Adjustable waist
- Elastic in the back
- Hidden press buttons in fly
- 2 side pockets with hidden pressbuttons
- 1 back pocket with hidden press buttons
- 2 thigh pockets with flap and hidden snapbuttons
- Straps for hanging up in a steamer
- Inside length 80 cm
- 18119 - inside length 90 cm, white
- Size XS-4XL



18116-101-101 white



18116-101-701 light grey



18116-101-602 royal blue

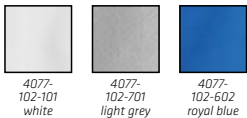
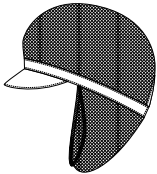
## QUALITY

101 65/35% PES/CO, 245g/m<sup>2</sup>



4077 CAP WITH MESH

- Mesh in crown
- Mesh at the back for long hair
- Adjustable in the back with press buttons
- Mesh: 100% polyester
- Size one size

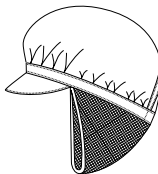


**QUALITY**  
102 65/35% PES/CO, 210g/m<sup>2</sup>



4072 CAP WITH MESH

- Mesh at the back for long hair
- Velcro fastener in back for adjusting
- Mesh: 100% polyester
- Size one size

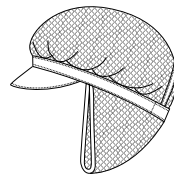


**QUALITY**  
102 65/35% PES/CO, 210g/m<sup>2</sup>



4073 CAP WITH MESH

- Mesh in crown
- Mesh at the back for long hair
- Velcro fastener in back for adjusting
- Mesh: 100% polyester
- Size one size



**QUALITY**  
102 65/35% PES/CO, 210g/m<sup>2</sup>



A man with short dark hair is looking off to the side, wearing a navy blue work jacket with reflective white stripes and a white t-shirt underneath. The background is a blurred outdoor setting with trees.

## PRO WEAR BY ID®

Hard work calls for clothes designed for movement and wear. PRO wear by ID® is the solution for employees who are physically active in their work, and who need clothes that withstand hard wear day after day. PRO wear by ID® is available in many sizes and variations, but all products are designed for movement, and are comfortable to wear in any working position. The clothes are pre-shrunk, so you can always rely on the fit. White garments withstand daily washing at temperatures up to 80 degrees, while colored garments can be washed at 60 degrees.

# ID<sup>®</sup> 10 principles

With the UN Global Compact as the point of departure.

ID<sup>®</sup> takes its responsibility as a clothing manufacturer seriously. ID<sup>®</sup> has therefore drawn up a Code of Conduct which sets out requirements for suppliers and business partners. When you trade with ID<sup>®</sup>, you can trade with a clear conscience - and when your customers trade with you, you can recommend ID<sup>®</sup>'s products as ethically responsible.

## DANISH WIND POWER

ID<sup>®</sup> has reorganised 100% of its energy purchases to renewable and CO2-neutral energy produced by Danish wind power.

### 01

#### Child labour



ID<sup>®</sup> will support effective abolition of child labour.

### 06

#### Forced labour



ID<sup>®</sup> will support abolition of all forms of forced labour.

### 02

#### Working hours and rest periods



ID<sup>®</sup> will comply with current national legislation and industry standards on working hours, rest and holidays.

### 07

#### Anti corruption



ID<sup>®</sup> will resist all forms of corruption, such as blackmail and bribery.

### 03

#### Wages and conditions of employment



ID<sup>®</sup> will support abolition of discrimination in working conditions and employment terms.

### 08

#### The working environment



ID<sup>®</sup> will secure a safe, healthy work environment and prevent potential accidents and injuries.

### 04

#### Law and legislation



ID<sup>®</sup> will support and respect protection of internationally declared human rights.

### 09

#### Environmental impact



ID<sup>®</sup> will support a cautious approach to environmental challenges and take initiatives to promote greater responsibility for the environment.

### 05

#### Differential treatment



ID<sup>®</sup> will ensure that we do not participate in violations of human rights.

### 10

#### Freedom of association



ID<sup>®</sup> will uphold freedom of association and effectively recognise the right to collective negotiation.

# Certifications & Memberships

## **BETTER COTTON**

ID® is a member of the Better Cotton Initiative. Better Cotton exists to make global cotton production better for the people who produce it, better for the environment it grows in and better for the future of the industry. Better Cotton is sourced via a system of Mass Balance and is not physically traceable to end products. By using a system of Mass Balance, BCI can reach more farmers, meaning more sustainable practices are being implemented around the world.

## **UN GLOBAL COMPACT**

ID® is a member of Global Compact. ID® wants to act responsibly and contribute to a sustainable development. The membership provides ID® with a basis for working with the internationally acknowledged conventions about: Human rights – Employees' rights – Environment – Anti corruption.

## **AMFORI**

ID® is a member of Amfori BSCI. BSCI (Business Social Compliance Initiative) is a network of 2.400+ European companies which have formulated a set of common ethical principles for purchasing and production in non-EU countries. This means production where there is no child labour, forced labour or any form of discrimination, the guarantee of a safe

working environment and reasonable wages and working hours. The rules also carefully consider the environment.

## **INTERNATIONAL ACCORD**

The Accord on Fire and Building Safety in Bangladesh (the Accord), from November 2023, is a three-year independent, legally binding agreement between apparel brands and retailers and trade unions designed to build safe and healthy Bangladeshi Ready made Garment (RmG) Industry.

## **BUREAU VERITAS**

The Bureau Veritas Group is one of today's largest companies in the world within inspection, classification, counseling, and certification. They supply services of high quality, safety, environmental protection, and social responsibility.

## **TEKSTILREVOLUTIONEN (TEXTILE REVOLUTION)**

ID® is a member of the Textile Revolution, a textile policy think tank working for a textile industry that makes a positive impact on the world and the people who live in it. In collaboration with the Textile Revolution, ID® wants to become a frontrunner in the circular transition by calculating our climate and en-



*Move Forward with Confidence*



environmental footprint and then implementing circular solutions where the product is used in new ways at the end of its life.

#### ECOLABEL

The Ecolabel is your guarantee that clothing bearing the EU Ecolabel impacts the environment as little as possible and ensures that the clothing does not contain pesticide residues and other environmentally harmful chemicals, that eco-friendly dyes have been used and that wastewater is handled responsibly.

#### TENCEL™ LYOCCELL

TENCEL™ Lyocell fibers are derived from controlled or certified wood sources and produced in a closed loop process which recovers 99.8% of the solvent – resulting in a close-to-zero wastage. TENCEL™ is a trademark of Lenzing AG.

#### HACCP DIN 10524

The product has been developed to meet the hygiene requirements for food production as defined in HACCP – certified by Hohenstein.

#### ISO 15797

ISO 15797 is an international standard for evaluating a product's suitability for industrial washing.

The tests are carried out in close cooperation with external experts.

#### OEKO-TEX® STANDARD 100 - ANNEX 4, PRODUCT CLASS 2

Is subject to requirements covering pH value and the content of, for example, pesticides and heavy metals.

#### OEKO-TEX® STANDARD 100 – ANNEX 6, PRODUCT CLASS 1

Places even stricter requirements on the content of hazardous to human health and the environment.

#### OEKO-TEX® STANDARD 100 – RECYCLED, ANNEX 6, PRODUCT CLASS 1

Places additional, more stringent requirements on products which contain more than 20% recycled fiber material and are subjected to special test processes.



## PRO Wear by ID<sup>®</sup>

All PRO Wear by ID<sup>®</sup> products have been pre-shrunk at very high temperatures, both before and after dyeing, for extra stability and long life.



53740 PRO WEAR CARE POLOSHIRT ID0374  
53750 PRO WEAR CARE POLO LADIES ID0375

- Responsible Choice
- EU Ecolabel certified
- Durable polo shirt with catalina collar
- Button closure with hidden press buttons
- Extra durable
- Certified according to DIN ISO 10524 and meeting the hygiene requirements of Risk Class 1-3 issued by Hohenstein Laboratories
- Size XS-6XL

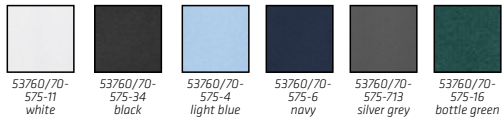


**QUALITY**  
575 50/50% CO/rPES, 220g/m<sup>2</sup>



53760 PRO WEAR CARE POLOSHIRT ID0376  
53770 PRO WEAR CARE POLO LADIES ID0377

- Responsible Choice
- EU Ecolabel certified
- Classic cut
- Polo collar
- Short sleeves
- Size XS-6XL



**QUALITY**  
575 50/50% CO/rPES, 220g/m<sup>2</sup>





53700 PRO WEAR CARE T-SHIRT ID0370  
53710 PRO WEAR CARE T-SHIRT LADIES ID0371

- Responsible Choice
- EU Ecolabel certified T-shirt with round neck
- Extra durable
- Certified according to DIN ISO 10524 and meeting the hygiene requirements of Risk Class 1-3 issued by Hohenstein Laboratories
- Size XS-6XL



**QUALITY**  
575 60/40% CO/rPES, 220g/m<sup>2</sup>



53720 PRO WEAR CARE T-SHIRT ID0372  
53730 PRO WEAR CARE T-SHIRT LADIES ID0373

- Responsible Choice
- EU Ecolabel certified T-shirt with V-neck
- Extra durable
- Certified according to DIN ISO 10524 and meeting the hygiene requirements of Risk Class 1-3 issued by Hohenstein Laboratories
- Size XS-6XL



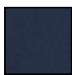




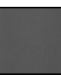
**QUALITY**  
575 60/40% CO/rPES, 220g/m<sup>2</sup>





53800 PRO WEAR CARE SWEAT ID0380  
53810 PRO WEAR CARE SWEAT LADIES ID0381

- Responsible Choice
- EU Ecolabel certified
- Extra durable
- Classic cut
- Round neck
- Long sleeves
- Certified according to DIN ISO 10524 and meeting the hygiene requirements of Risk Class 1-3 issued by Hohenstein Laboratories
- Size XS-6XL

					
53800/10-575-6 navy	53800/10-575-16 bottle green	53800/10-575-11 white	53800/10-575-34 black	53800/10-575-4 light blue	53800/10-575-713 silver grey

#### QUALITY

575 60/40% CO/rPES, 320g/m<sup>2</sup>



PRO Wear.

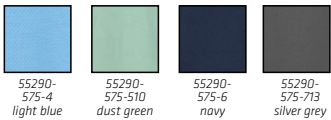
60/40%





♀  
55290 T-SHIRT LYOCELL LADIES ID0529

- Responsible Choice
- Round neck
- Short sleeves
- Certified according to DIN ISO 10524 and meeting the hygiene requirements of Risk Class 1-3 issued by Hohenstein Laboratories
- Size XS-6XL

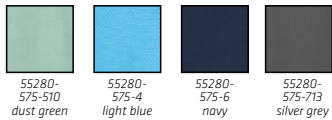


QUALITY  
575 70/30% rPES/CLY, 200g/m²



♂  
55280 T-SHIRT LYOCELL ID0528

- Responsible Choice
- Round neck
- Short sleeves
- Certified according to DIN ISO 10524 and meeting the hygiene requirements of Risk Class 1-3 issued by Hohenstein Laboratories
- Size XS-6XL



QUALITY  
575 70/30% rPES/CLY, 200g/m²







♀  
53360 PRO WEAR POLO SHIRT L/S ID0336

- Extra durable
- Long sleeves
- Press buttons on the placket
- Neck and shoulder bands
- Halfmoon at neck
- Certified according to DIN ISO 10524 and meeting the hygiene requirements of Risk Class 1-3 issued by Hohenstein Laboratories
- Size XS-6XL

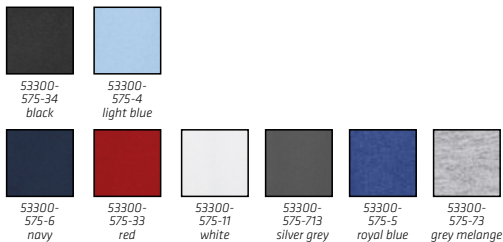


QUALITY  
575 50/50% CO/PES, 220g/m<sup>2</sup>



♀  
53300 PRO WEAR POLO SHIRT ID0330

- Extra durable
- Press buttons on the placket
- Neck and shoulder bands
- Halfmoon at neck
- Certified according to DIN ISO 10524 and meeting the hygiene requirements of Risk Class 1-3 issued by Hohenstein Laboratories
- Size XS-6XL



QUALITY  
575 50/50% CO/PES, 220g/m<sup>2</sup>

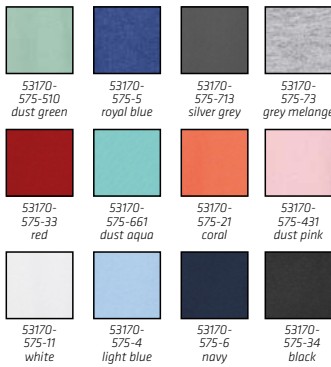






♀  
53170 PRO WEAR T-SHIRT  
LADIES ID0317

- Extra durable
- Four-layer neck ribbing
- Light quality
- Neck and shoulder bands
- Halfmoon at neck
- Certified according to DIN ISO 10524 and meeting the hygiene requirements of Risk Class 1-3 issued by Hohenstein Laboratories
- Size XS-6XL

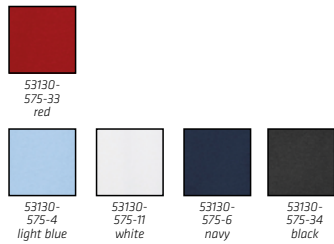


QUALITY  
575 50/50% CO/PES, 175g/m<sup>2</sup>



♀  
53130 PRO WEAR T-SHIRT  
LADIES ID0313

- Extra durable
- Slightly form-fitting
- Round neck
- 3/4 - length sleeves
- Side slits
- Certified according to DIN ISO 10524 and meeting the hygiene requirements of Risk Class 1-3 issued by Hohenstein Laboratories
- Size S-6XL

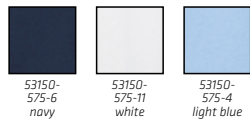


QUALITY  
575 60/40% CO/PES, 220g/m<sup>2</sup>



♀  
53150 PRO WEAR T-SHIRT  
LADIES ID0315

- Extra durable
- Slightly form-fitting
- Round neck
- 1/2 sleeves
- Certified according to DIN ISO 10524 and meeting the hygiene requirements of Risk Class 1-3 issued by Hohenstein Laboratories
- Size XS-7XL



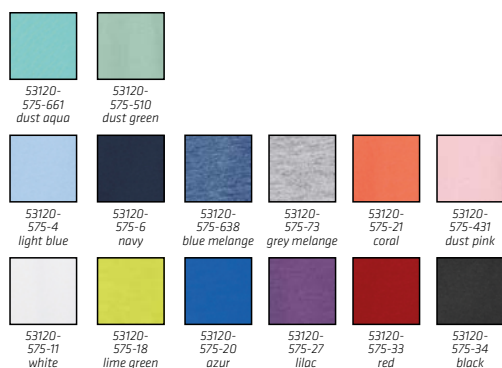
QUALITY  
575 60/40% CO/PES, 220g/m<sup>2</sup>





## 53120 PRO WEAR T-SHIRT LADIES ID0312

- Extra durable
- Slightly form-fitting
- Round neck
- Side slits
- Certified according to DIN ISO 10524 and meeting the hygiene requirements of Risk Class 1-3 issued by Hohenstein Laboratories
- 7XL only in white, grey melange, navy and light blue
- Size XS-7XL



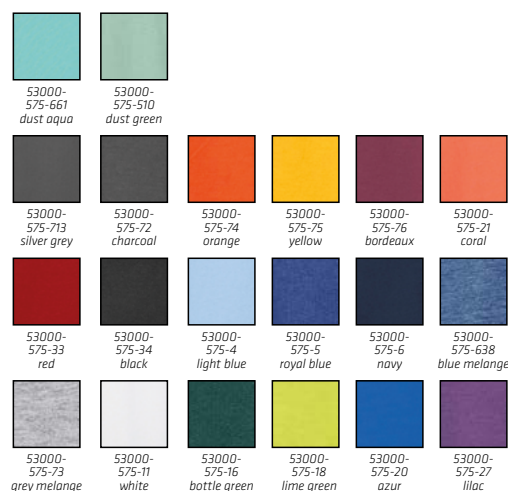
### QUALITY

575 60/40% CO/PES, 220g/m<sup>2</sup>



## 53000 PRO WEAR T-SHIRT ID0300

- Extra durable
- Four-layer neck ribbing
- Neck and shoulder bands
- Halfmoon at neck
- Certified according to DIN ISO 10524 and meeting the hygiene requirements of Risk Class 1-3 issued by Hohenstein Laboratories
- 7XL in white and navy
- XS only in white, silver grey, navy, black, light blue, royal blue, charcoal, red and grey melange
- Size XS-6XL



### QUALITY

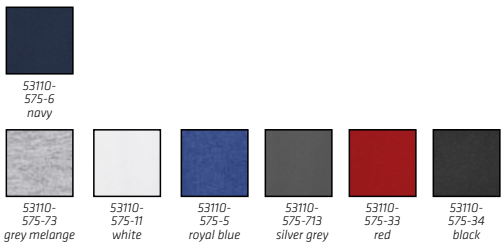
575 60/40% CO/PES, 220g/m<sup>2</sup>





♀  
53110 PRO WEAR T-SHIRT L/S ID0311

- Extra durable
- Long sleeves
- Four-layer neck ribbing
- Neck and shoulder bands
- Halfmoon at neck
- Certified according to DIN ISO 10524 and meeting the hygiene requirements of Risk Class 1-3 issued by Hohenstein Laboratories
- Size S-6XL

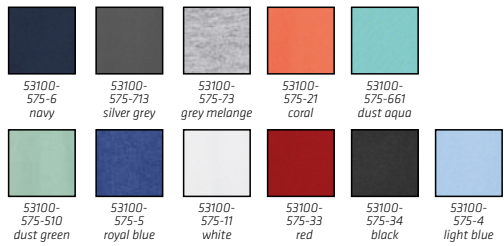


QUALITY  
575 60/40% CO/PES, 220g/m²



♀  
53100 PRO WEAR T-SHIRT LIGHT ID0310

- Extra durable
- Light quality
- Four-layer neck ribbing
- Neck and shoulder bands
- Halfmoon at neck
- Certified according to DIN ISO 10524 and meeting the hygiene requirements of Risk Class 1-3 issued by Hohenstein Laboratories
- Size XS-6XL



QUALITY  
575 50/50% CO/PES, 175g/m²





